

KBM VEC-1

This product has obtained the Certificate of Material Eligibility for Regenerative Medicine Products in Japan.

Applications

KBM VEC-1 medium can be applied to the research of vascular pathology and angiogenesis, drug development, and toxicity testing.

Characteristics

- Low-serum medium which is composed of a 500mL basal medium, a supplement and a final concentration of FBS in the basal medium is 2 %.
- FBS used is approved in quality by inspections in every composition.
- Use of the medium within 1 month after addition of FBS and supplement is recommended.
- Human serum can be used for a substitute for FBS.



Supplement			
rhEGF	rhFGF-basic	rhVEGF ₁₆₅	rhIGF- I

Cell Culture Example

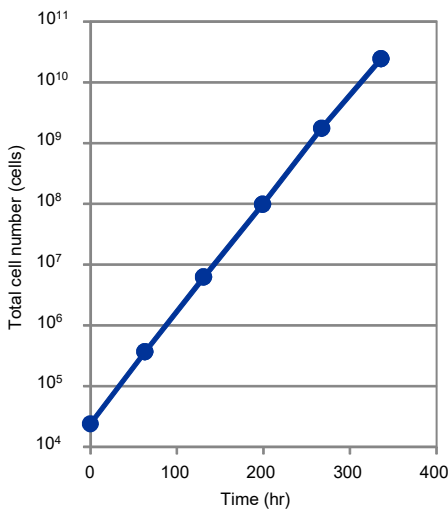


Fig. 1 : Growth curves in passage culture

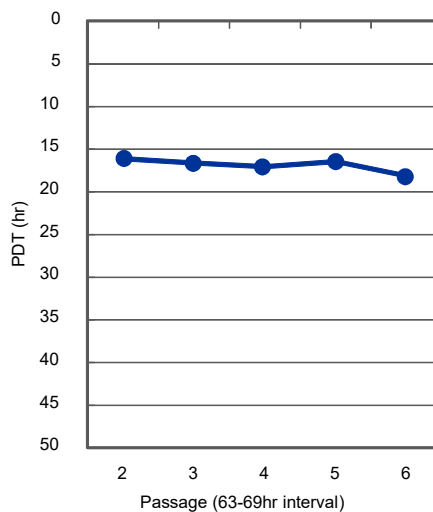


Fig. 2 : Variation of PDT in passage culture

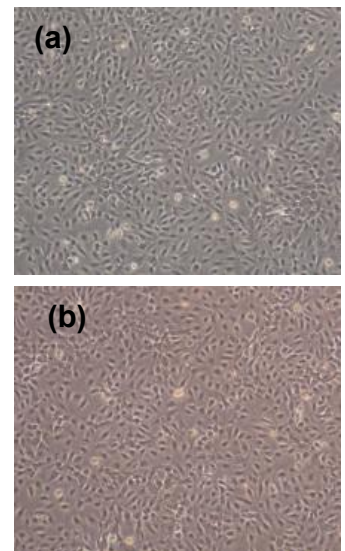


Fig.3 (a) HUVEC at Day 3 in P3
(b) HUVEC at Day 3 in P7

【Protocol】

Seeded Cells : Human umbilical vein endothelial cells (HUVEC)

Culture Media : KBM VEC-1

Culture Vessel : 6 well cell culture plate (Corning 3516)

Protocols : 2.4 × 10⁴ cells/well seeded and static culture in 37 °C • 5 % carbon dioxide gas environment. Subculture at 3 days intervals.

Product No.	Product Name	Size	Price	Shelf Life	Storage
16030110	KBM VEC-1 Basal Medium	500 mL	JPY 7,000	1 year	-20 °C
16030120	KBM VEC-1 Supplement	0.5 mL	JPY 9,000	2 years	-20 °C
16030130	KBM VEC-1 FBS	10 mL	JPY 5,000	—	-20 °C